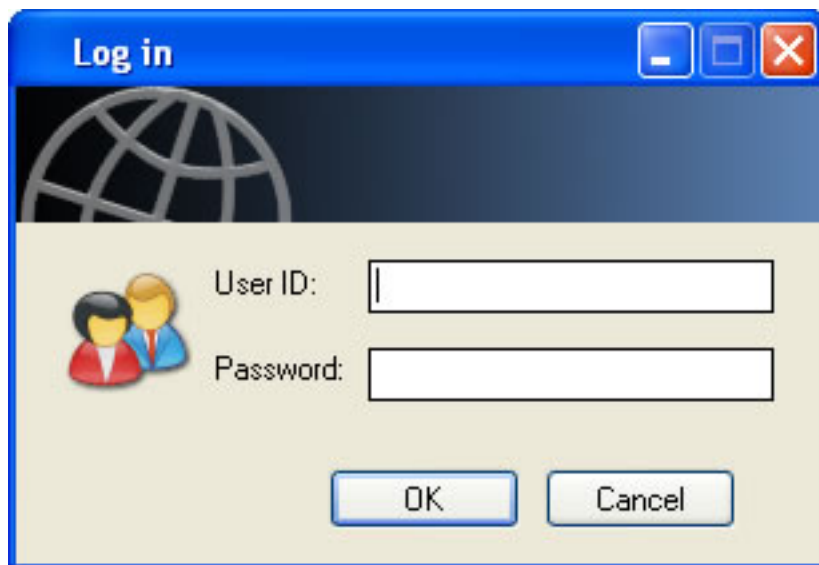


Archery Scoring Software

Security Module

I have been asked to include some kind of password protection to prevent the software being used by anyone unauthorized to do so, particularly during the scoring phase of a competition. I have added a module that allows the end user to setup levels of security from 1 – 255 and restrict access to each individual screen based on the access privileges the user has. For the purpose of distribution and our own club use, I have setup each procedure to have an access level of between 1 and 3 (you can alter this at any time) For example to delete records or to access the scoring screen then a user must have an access level of 3 or higher. To view most of the information, an access level of 2 will work. It is also possible to easily swap users during a session, so for example if you want one person to log competitors into an event but someone with higher privileges to score, then this is easily achieved. Please Note: you must have one or more users with administrator privileges to be able to add new users and modify the security level of each screen. Also, only an administrator can access the security log to see who has been logging in and what screens they have been accessing.



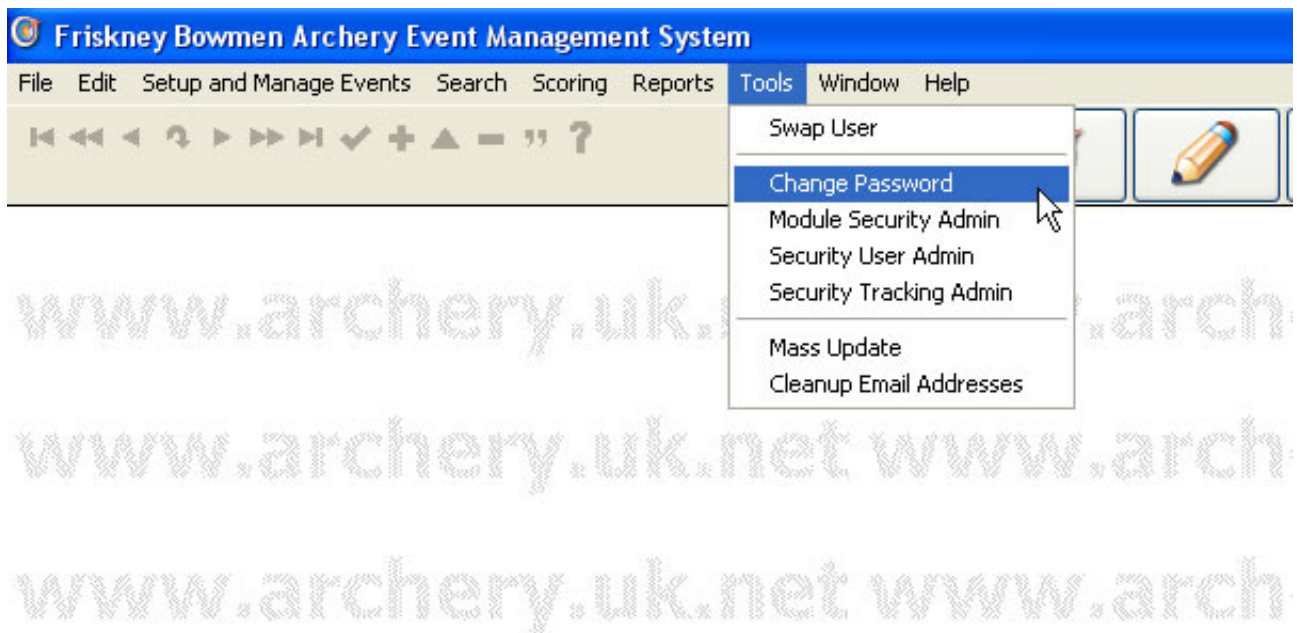
Here is the login prompt, the program is shipped with two users **PLEASE CHANGE THESE AS SOON AS YOU HAVE SETUP YOUR OWN USERS.**

Admin level user with level 3 privileges USER ID : admin PASSWORD: admin

Normal User with level 2 access USER ID : user PASSWORD : user

Changing a Password

A user can change their own password at anytime they are logged in.



First Select – 'Change Password' from the Tools menu.

A screenshot of a dialog box titled "New Password". The dialog box has a blue title bar with standard window controls (minimize, maximize, close). The main content area is light beige and contains the text "user id = admin Password = admin". Below this text are three input fields: "User ID:" with the value "admin", "Old Password:" which is empty, and "New Password:" which is empty. At the bottom of the dialog box are two buttons: "OK" and "Cancel".

You now must confirm your old password then enter a new password. Please note that you cannot re-use the same password. If you decide you want to keep your original password just click the cancel button.

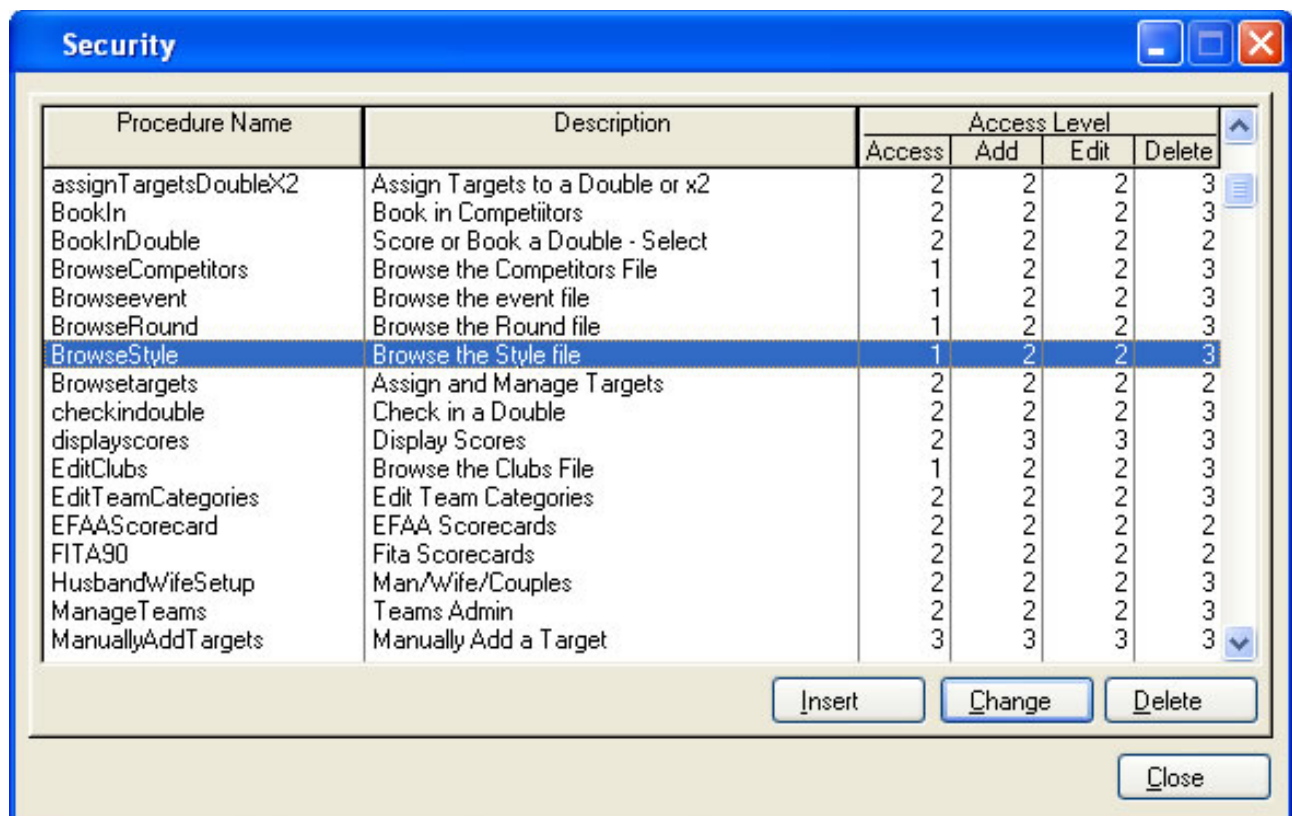
Administration Functions

Adding, Editing or Deleting Module(Screen) security

Each program module or screen can be individually controlled. The access level set by an administrator. First you must login as an administrator.

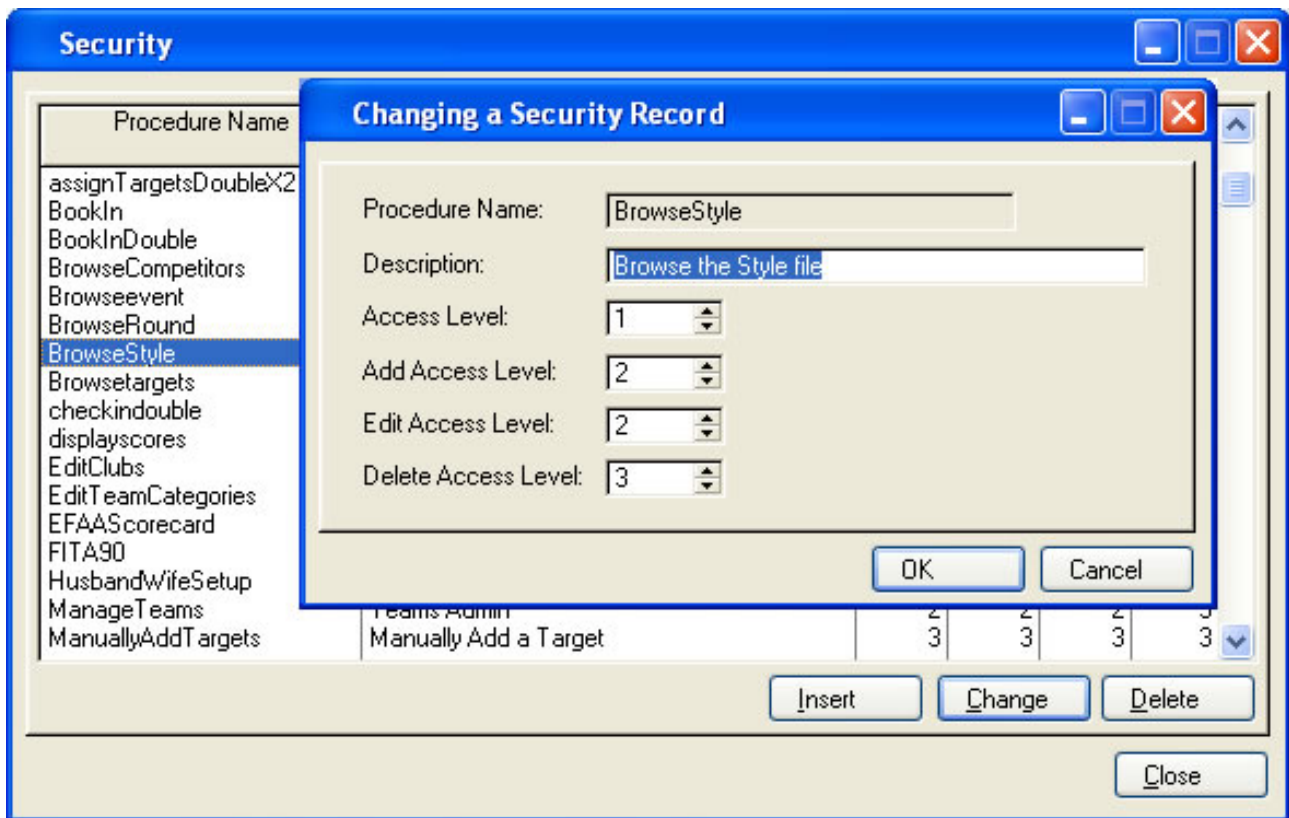
To edit or delete an existing procedure

Select 'Module Security Admin' from the Tools menu and the following screen will open.



Here you can see the actual procedure name in the left hand column, a more friendly description in the next column and finally the access levels required to Access, Add, Edit and Delete records accessed from that screen or procedure. To delete an access level of an existing procedure simply click the delete button when the procedure is highlighted by the blue scroll bar. If you delete the access levels then anyone running the program will have full access to the particular procedure. You can of course go back and re-add the access levels at anytime in the future.

To edit an existing access level, click on the 'Change' button and this will open an edit window as shown below.



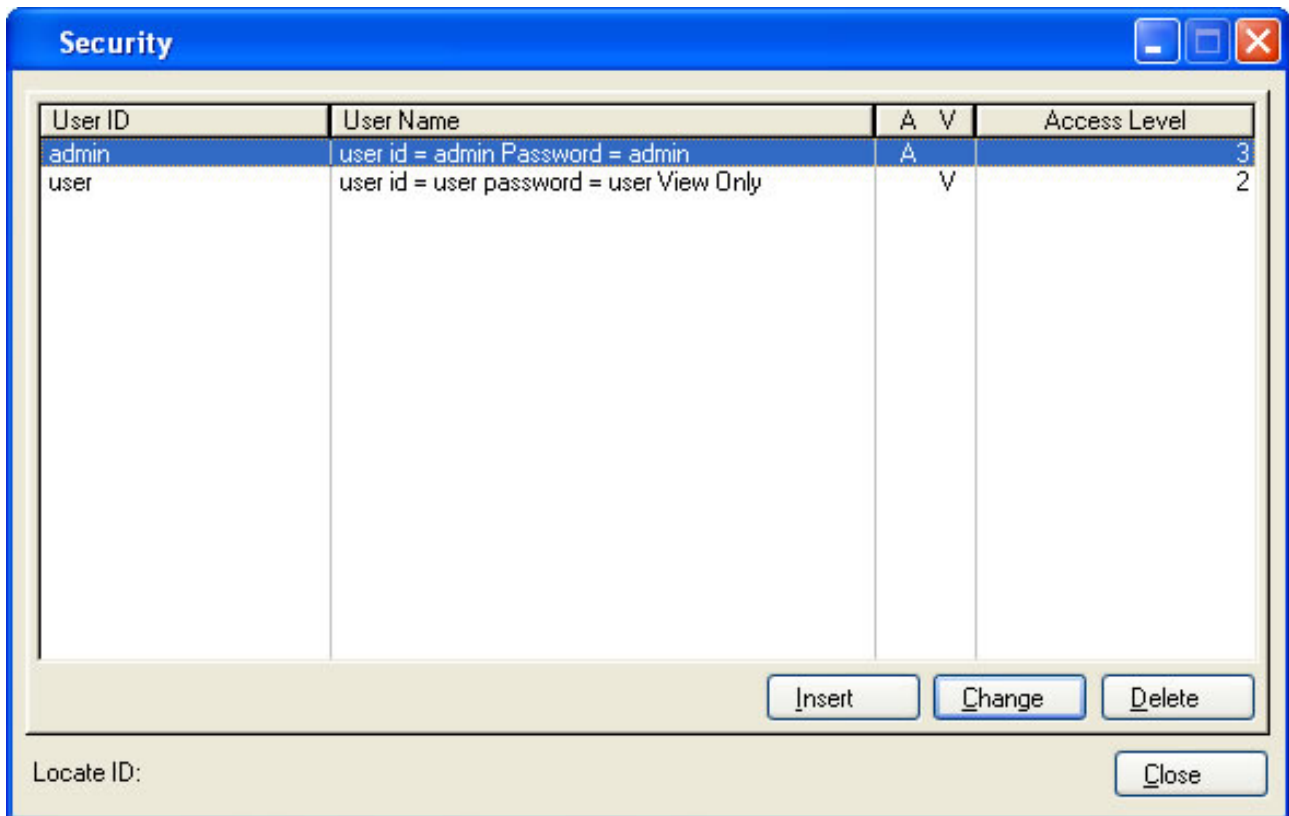
You cannot edit the procedure name as this is my reference within the actual program to call each procedure. However you can alter the user friendly description. The first numeric field is the 'Access Level' this is the level a user must have to be able to even view the screen. Often all the other levels will match, however you may want to make the 'Delete Access Level' higher than the add or edit level.

When finished editing simply close this window with OK.

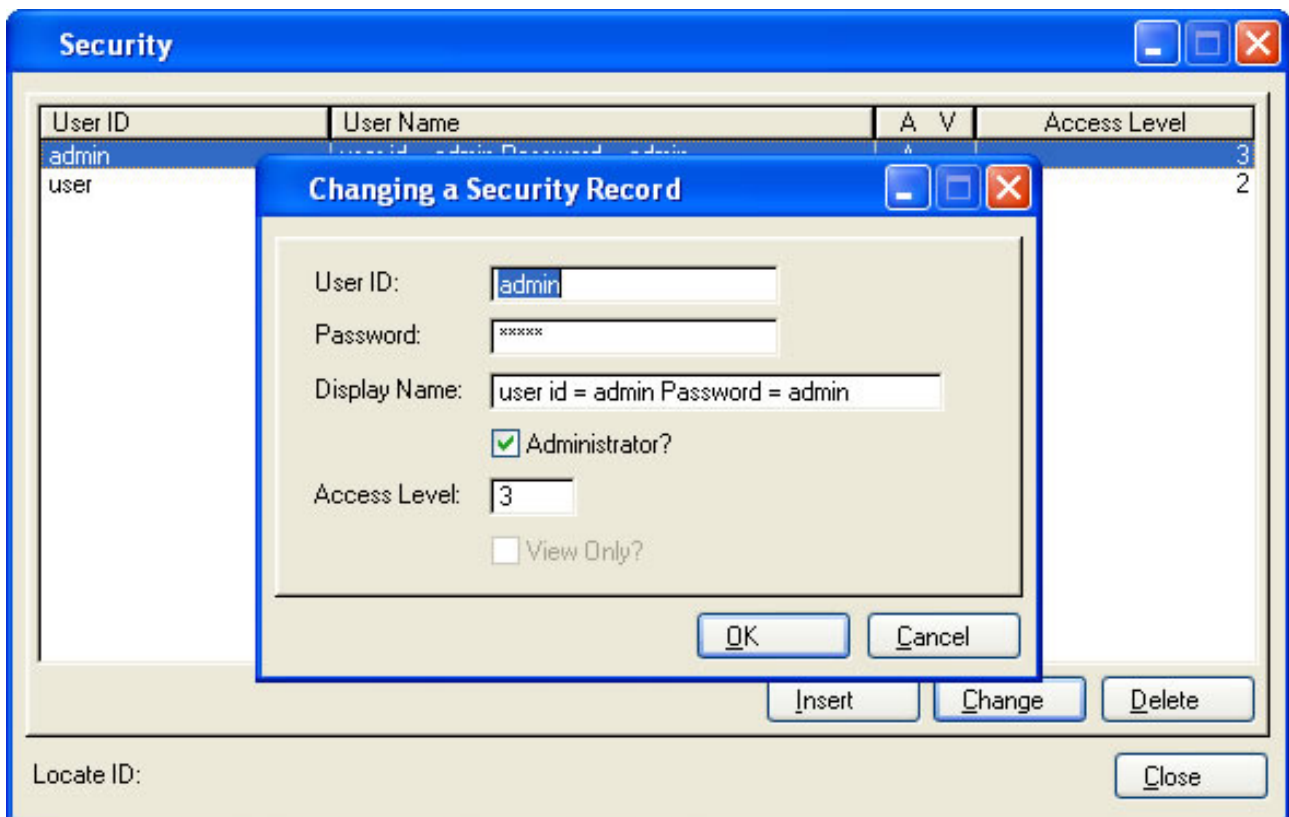
To add an Access level to a Screen that is not protected or to a screen that you have previously deleted the access level to, simply re-open the screen or level that you wish to add security to, close it, then immediately select 'Module Security Admin' from the Tools menu, this will open the above screen in a position ready to edit the security levels.

Adding, Editing or Deleting Users

Possibly the most important function is the ability to add, edit or delete users from the security system. While you can create up to 255 levels of security I would suggest you keep the number as low as possible for your clubs needs . First select 'Security User Admin' from the Tools menu and the following screen will open (Remember always to have at least one user with admin privileges)



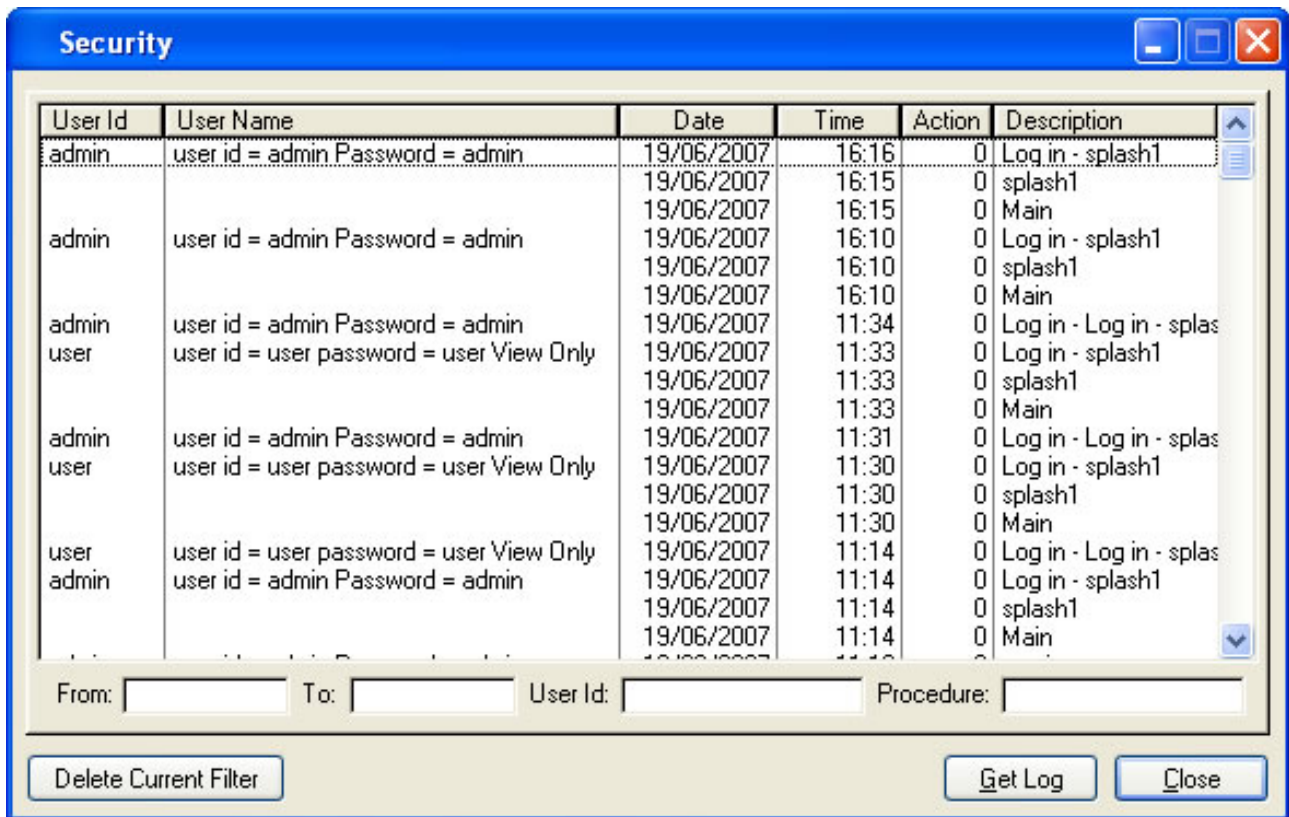
Here you will see a list of all users, the functions are self explanatory, Add, Change or Delete.



Here is where you set the access level and whether or not this user is an administrator.

Viewing Access Logs

Although this function may never be required, if there is ever a dispute about which user was logged in at whatever time, in screen 'X' then this function may help. Select the 'Security Tracking Admin' from the Tools menu and the following screen will open:



The screenshot shows a window titled "Security" with a table of access logs. The table has the following columns: User Id, User Name, Date, Time, Action, and Description. The data is as follows:

User Id	User Name	Date	Time	Action	Description
admin	user id = admin Password = admin	19/06/2007	16:16	0	Log in - splash1
		19/06/2007	16:15	0	splash1
		19/06/2007	16:15	0	Main
admin	user id = admin Password = admin	19/06/2007	16:10	0	Log in - splash1
		19/06/2007	16:10	0	splash1
		19/06/2007	16:10	0	Main
admin	user id = admin Password = admin	19/06/2007	11:34	0	Log in - Log in - splas
user	user id = user password = user View Only	19/06/2007	11:33	0	Log in - splash1
		19/06/2007	11:33	0	splash1
		19/06/2007	11:33	0	Main
admin	user id = admin Password = admin	19/06/2007	11:31	0	Log in - Log in - splas
user	user id = user password = user View Only	19/06/2007	11:30	0	Log in - splash1
		19/06/2007	11:30	0	splash1
		19/06/2007	11:30	0	Main
user	user id = user password = user View Only	19/06/2007	11:14	0	Log in - Log in - splas
admin	user id = admin Password = admin	19/06/2007	11:14	0	Log in - splash1
		19/06/2007	11:14	0	splash1
		19/06/2007	11:14	0	Main

Below the table are filter fields: From: [], To: [], User Id: [], Procedure: []. At the bottom are buttons: Delete Current Filter, Get Log, and Close.

It is fairly basic but it does give enough information to track access.